

DRIVING DIRECTIONS AND PARKING INFORMATION

**University of Florida
Institute on Aging Health Promotion Center
1395 Center Drive
Gainesville FL, 32610**

Please feel free to call (352) 273-9389 if you need further assistance.

DRIVING DIRECTIONS:

Driving Directions From Interstate 75 (I-75)

From Interstate 75 (I-75), take Exit 384, go East on SW Archer Road for approximately 2 1/2 miles. Turn left onto Gale Lemerand Drive (also called North-South Drive, as labeled on the map). Turn right at the light at the first intersection -- East Mowry Rd. Continue Down East Mowry Road until you see two large parking garages. Park in the second parking garage on the right hand side (Garage # 2) on the second or third floor.

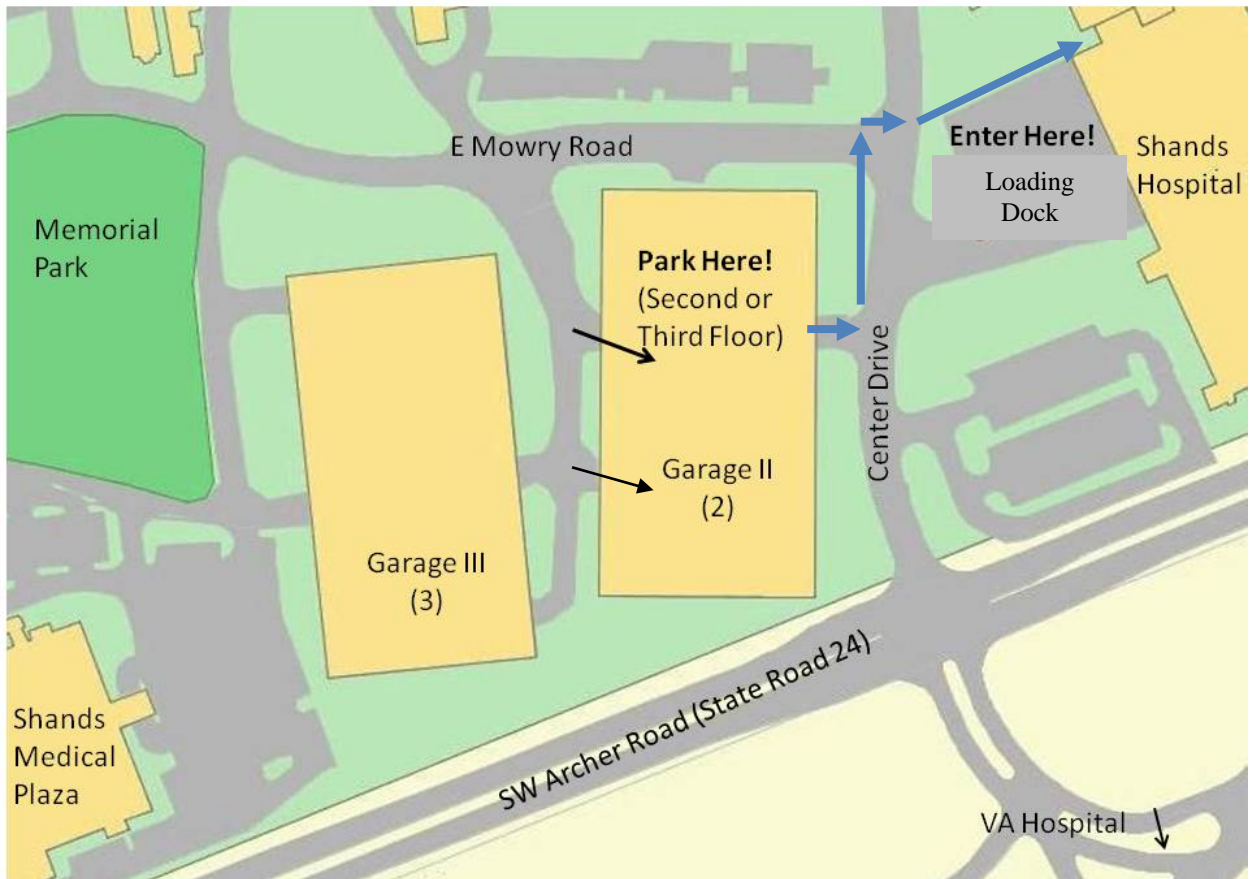
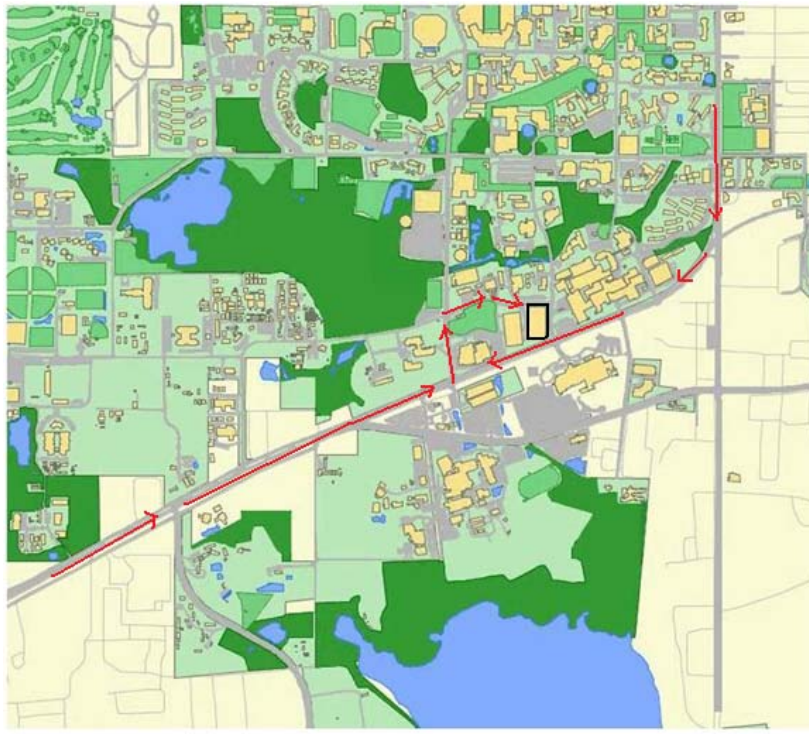
Driving Directions From US 441 (SW 13th Street)

From US 441 (SW 13th Street), turn West on SW Archer Road. Travel approximately 3/4 mile. Turn right onto Gale Lemerand Drive (also called North-South Drive, as labeled on the map). Turn right at the light at the first intersection -- East Mowry Rd. Continue Down East Mowry Road until you see two large parking garages. Park in the second parking garage on the right hand side (Garage # 2) on the second or third floor.

PARKING DIRECTIONS:

Upon arriving at Parking Garage 2, you will take a right to go up the hill to access the second and third floors of the garage. You will not be able to park on the first floor. Please take a ticket as prompted. If you have an oversized vehicle, that is over 18ft long or 7ft high, you can park in the oversized vehicle parking spaces directly across from parking garage 2.





DIRECTIONS TO HEALTH PROMOTION CENTER

University of Florida
Institute on Aging Health Promotion Center
1395 Center Drive
Gainesville FL, 32610

Please feel free to call (352) 273-9389 if you need further assistance.

After Parking in the Parking Garage, you will need to walk to the Health Promotion Center (blue arrows on map). Exit the parking garage and continue to walk East on Mowry Road. Continue on Mowry Road until the crosswalk at the corner of Mowry and Center Drive. Cross over Center drive and enter into the **Faculty, Student and Staff Entrance** of the Health Science Center (Shands). There will be a sign that reads Health Science Center: Faculty – Students – Staff : Patients and Visitors use West Entrance.



Continue into double doors, and straight through the blue door with the sign that says: Automatic Door – Caution. Continue straight down the hallway almost until the end until seeing a small sign on the left saying “Institute on Aging Health Promotion Center” →”. Take a right down that hallway and enter into the second door on the right (DG-22G).

